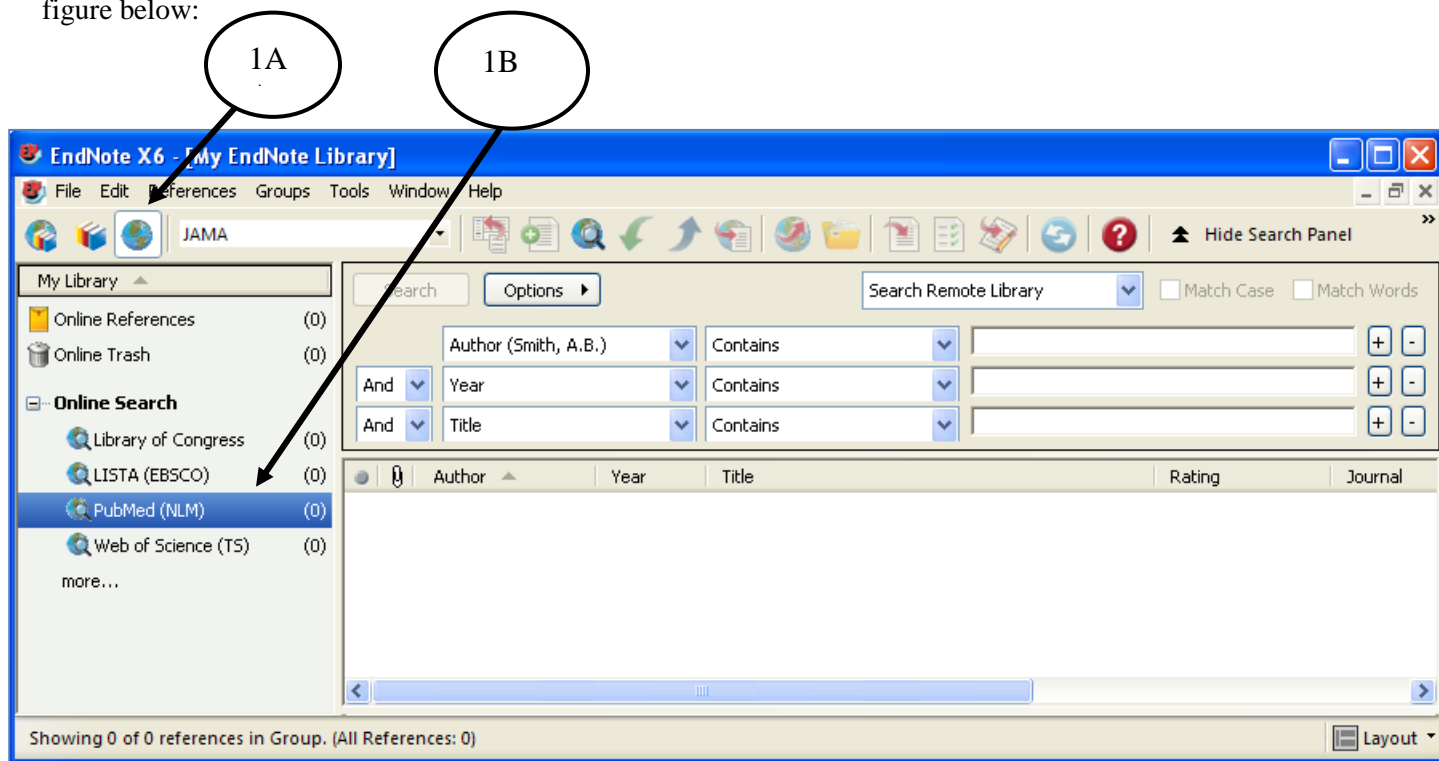


For PCs:

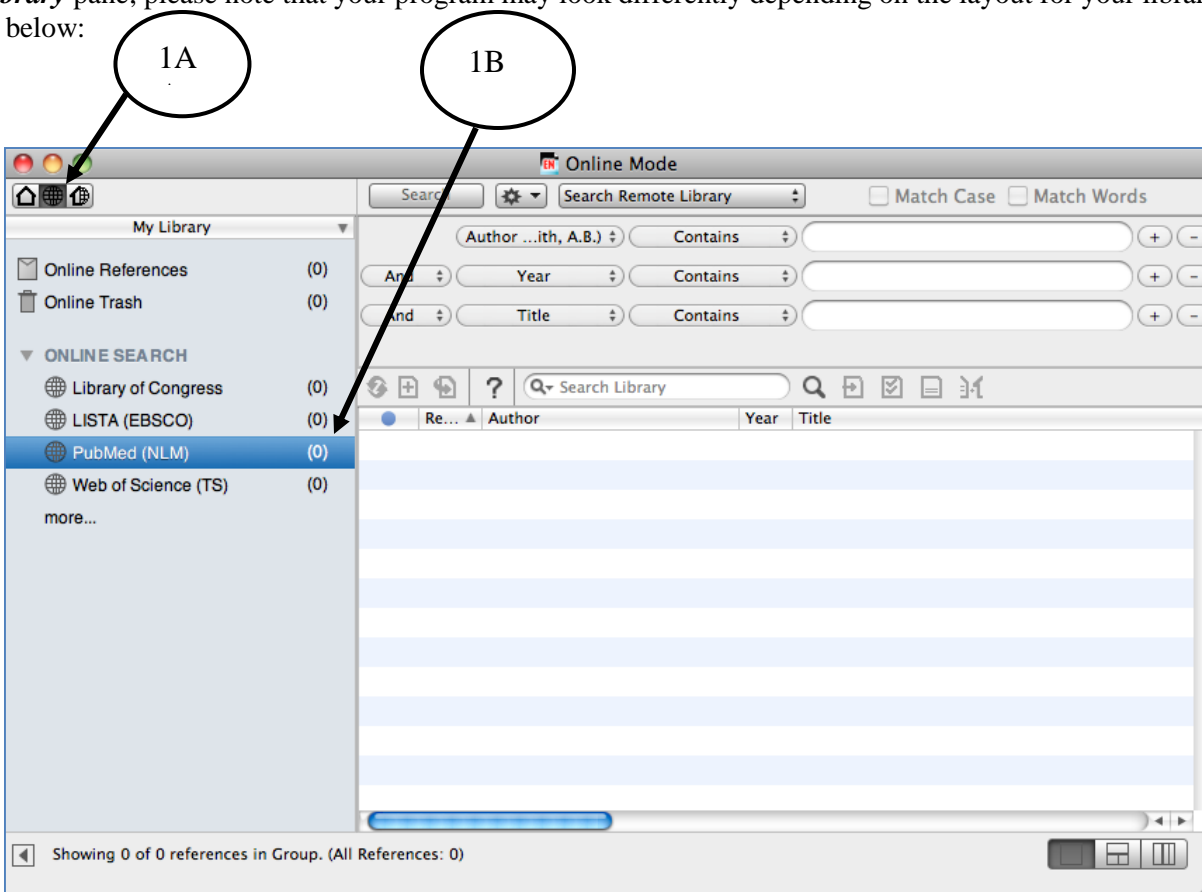
1. Launch EndNote. (**You must be connected to the Internet for the Connection file to function.**) Click on the **globe icon** to create a temporarily library of retrieved results (1A). Then **Choose PubMed (NLM)** under the Online Search option on the left panel in your library (1B). You should see boxes for searching fields in PubMed to the right of the **My Library** pane; please note that your program may look differently depending on the layout for your library. See the figure below:



3. Type in a word or phrase to search and designate the specific field to be searched. To combine terms, type in the terms in the separate boxes and choose the appropriate “AND” “OR” “NOT” function. Then hit **Enter** or click on the **Search** option.
4. You should get a **Confirm Online Search** window that tells you how many references were retrieved. You can dictate to EndNote how many of these you wish to retrieve and click **OK**. So if the search found 1000 references, you can direct EndNote to retrieve only the first 50. The citations retrieved will be in reverse chronological order: from the most recent and then backwards until it hits the designated number of citations you have requested.
5. Select the references you wish to put into your library clicking on one reference and then clicking on additional references with the Ctrl key held down. Once you have selected your references, right click on any of the highlighted references. You will see a menu appear. Select **Copy References to** and then select your location preference.
6. Once you have copied the references to the designated library, click on the icon with the globe and books. You will receive a “Are you sure you want to discard...” Click **OK**. When you go back to your library, you will see under the My Library panel, a “Copied References” that tells you how many references you copied and moved into your library. Click on **All References** to see all the references in your library.

For Macs:

1. Launch EndNote. (**You must be connected to the Internet for the Connection file to function.**) Click on the **globe icon** to create a temporarily library of retrieved results (1A). Then **Choose PubMed (NLM)** under the Online Search option on the left panel in your library (1B). You should see boxes for searching fields in PubMed to the right of the **My Library** pane; please note that your program may look differently depending on the layout for your library. See the figure below:



3. Type in a word or phrase to search and designate the specific field to be searched. To combine terms, type in the terms in the separate boxes and choose the appropriate “AND” “OR” “NOT” function. Then hit **Enter** or click on the **Search** option.
4. You should get a **Confirm Online Search** window that tells you how many references were retrieved. You can dictate to EndNote how many of these you wish to retrieve and click **OK**. So if the search found 1000 references, you can direct EndNote to retrieve only the first 50. The citations retrieved will be in reverse chronological order: from the most recent and then backwards until it hits the designated number of citations you have requested.
5. Select the references you wish to put into your library clicking on one reference and then clicking on additional references with the Command key held down. Once you have selected your references, go to the **References drop-down menu** and select **Copy References To** and then select your location preference.
6. Once you have copied the references to the designated library, click on the **house icon**. When you go back to your library, you will see under the My Library panel, a “Copied References” that tells you how many references you copied and moved into your library. Click on **All References** to see all the references in your library.